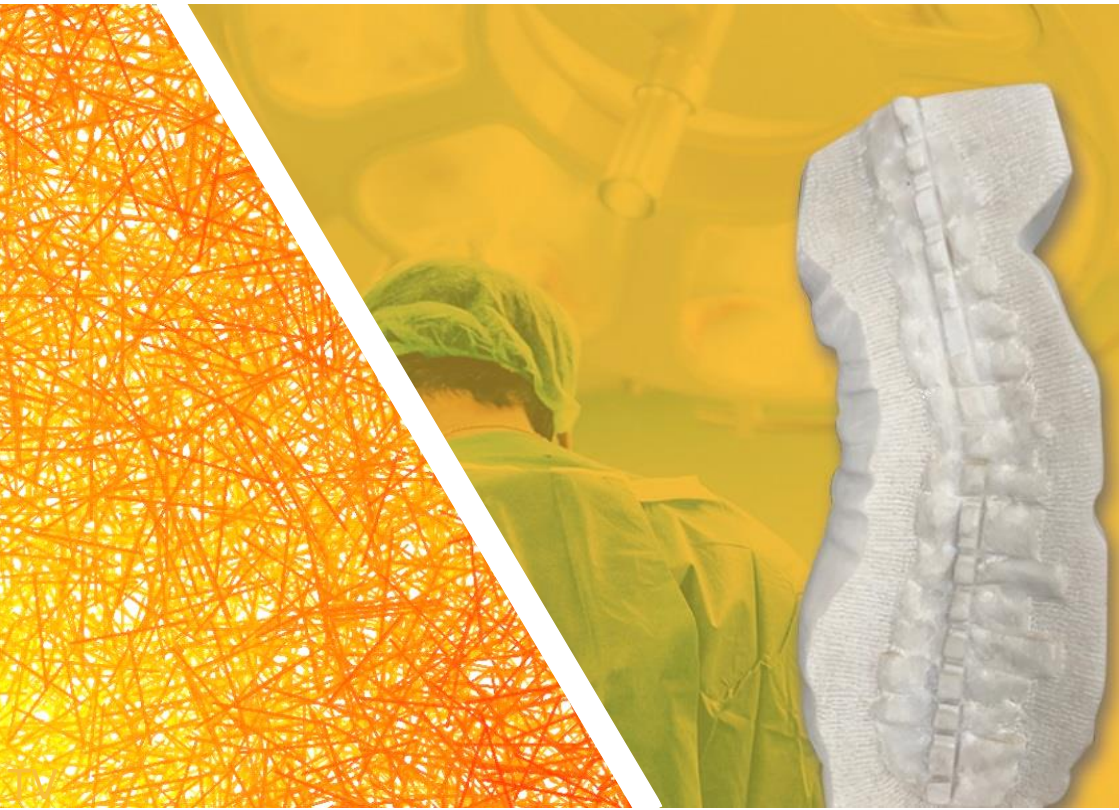


# Product Catalogue

---



**NovaSpine**



# Table Of Contents

---

05 SOCORE

19 DIVA

37 MATRIS

41 RODD



---

# SOCORE

---

Posterior Fixation System

# Monoaxial

Standard



Reduction



Cannulated

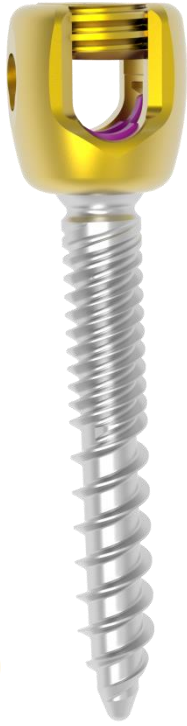


Ø4	L20	-	40	●
Ø5	L20	-	50	●
Ø6	L30	-	60	●
Ø7	L30	-	70	●
Ø8	L30	-	80	●
Ø9	L30	-	80	●

Ø4	L25	-	40	●
Ø5	L30	-	50	●
Ø6	L30	-	60	●
Ø7	L30	-	60	●

Ø5	L30	-	50	●
Ø6	L30	-	60	●
Ø7	L30	-	60	●
Ø8	L30	-	70	●
Ø9	L30	-	70	●

# Standard



Ø4 L20 - 40 ●

Ø5 L25 - 50 ●

Ø6 L30 - 60 ●

Ø7 L30 - 60 ●

# Reduction



Ø4 L20 - 40 ●

Ø5 L20 - 50 ●

Ø6 L30 - 60 ●

Ø7 L30 - 80 ●

Ø8 L30 - 80 ●

Polyaxial

T A 6 V



or



# Polyaxial

## Standard Cannulated



Ø5	L25	- 50	●
Ø6	L30	- 60	●
Ø7	L30	- 70	●
Ø8	L30	- 80	●

## Reduction Cannulated

Ø5	L25	- 50	●
Ø6	L30	- 60	●
Ø7	L30	- 70	●





## Standard



Ø4    L25 – 40    ●

Ø5    L25 – 50    ●

Ø6    L30 – 60    ●

Ø7    L30 – 60    ●

## Cannulated

Ø5    L25 – 50    ●

Ø6    L30 – 60    ●

Ø7    L30 – 60    ●



Multiplanar

T A 6 V



or

STERILE R

MISS XL



Ø5 L25 - 50 ●

Ø6 L30 - 60 ●

Ø7 L30 - 70 ●



## Orbis

Ø4	L20	-	40	<span style="color: green;">●</span>
Ø5	L20	-	50	<span style="color: orange;">●</span>
Ø6	L30	-	60	<span style="color: purple;">●</span>
Ø7	L30	-	70	<span style="color: blue;">●</span>
Ø8	L30	-	80	<span style="color: cyan;">●</span>
Ø9	L30	-	80	<span style="color: grey;">●</span>

## Monoplanar

Ø4	L25	-	40	<span style="color: green;">●</span>
Ø5	L25	-	50	<span style="color: orange;">●</span>
Ø6	L30	-	60	<span style="color: purple;">●</span>
Ø7	L30	-	60	<span style="color: blue;">●</span>



T A 6 V  or 

Hooks



Offset Body Hook



Offset Blade Hook



Laminar Hook  
S/M/L



Pedicle Hook



Lengthened Body  
Hook



## Hybrid crosslink



## Monoaxial crosslink



## Polyaxial crosslink



### Materials:

- *Titanium Alloy TA6V*
- *Cobalt-Chromium*
- *Pure Titanium T40*



Ø5.5 mm

Straight

L30 – 500

Ø5.5 mm

Pre-bent

L30 – 500

Ø5.5 mm

MISS Pre-bent

L30 – 135

Ø5.5 mm

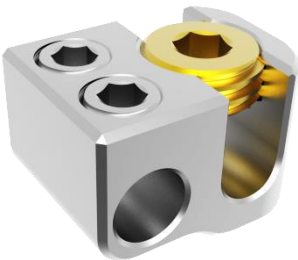
MISS Straight

L140 – 500

Opened Connector



Dominos



Iliac Connectors



Sacral plate



Sacro-iliac plate



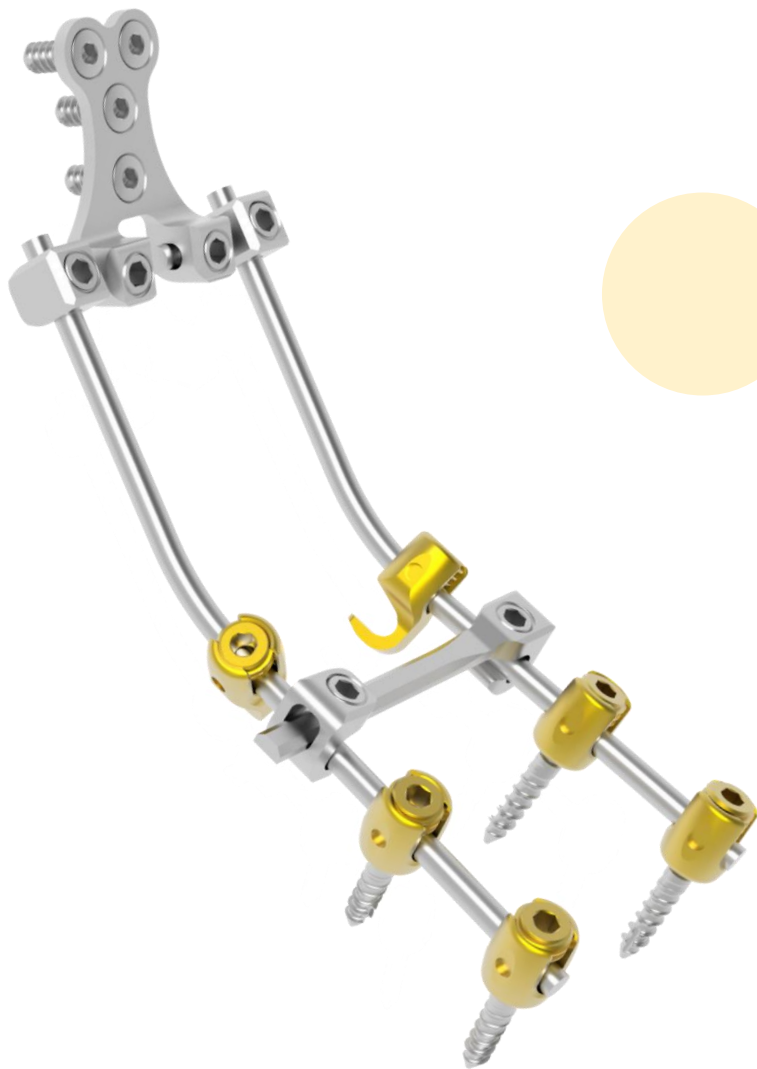
Connectors



---

# Cervical System

---





# Cervical Screw



Ø4 L10 - 40



Hooks



Dominos



Occipital Rod



Occipital plate

# Cervical System



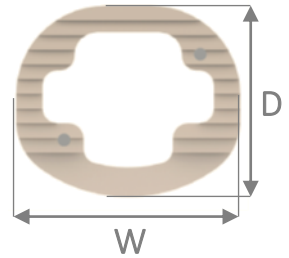
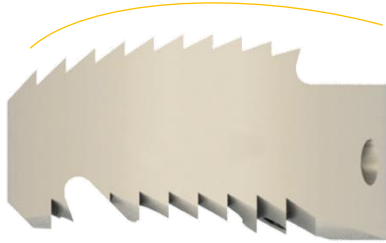
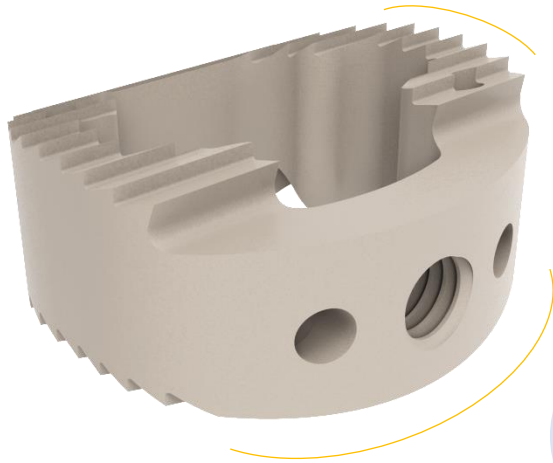
---

DIVA

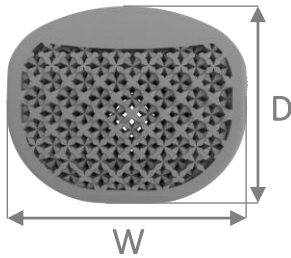
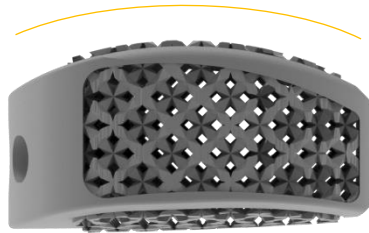
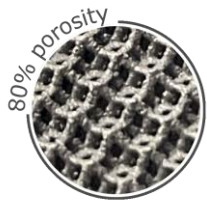
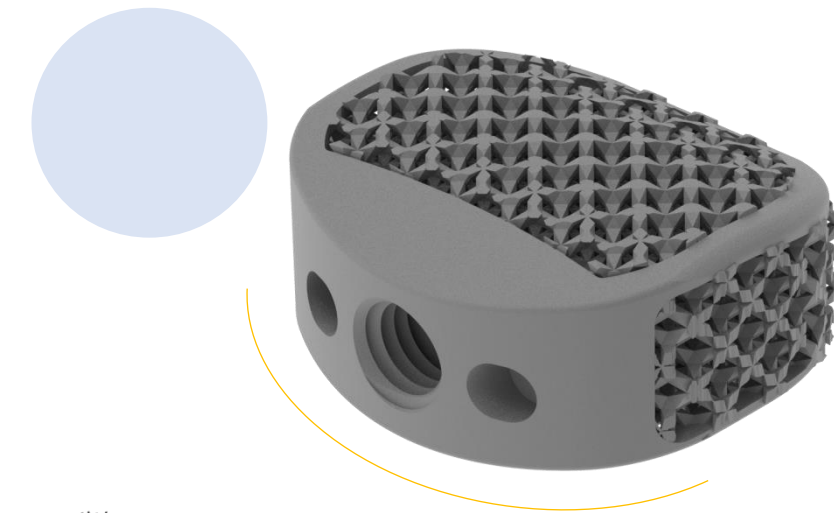
---

Intersomatic Cages

# ACDF



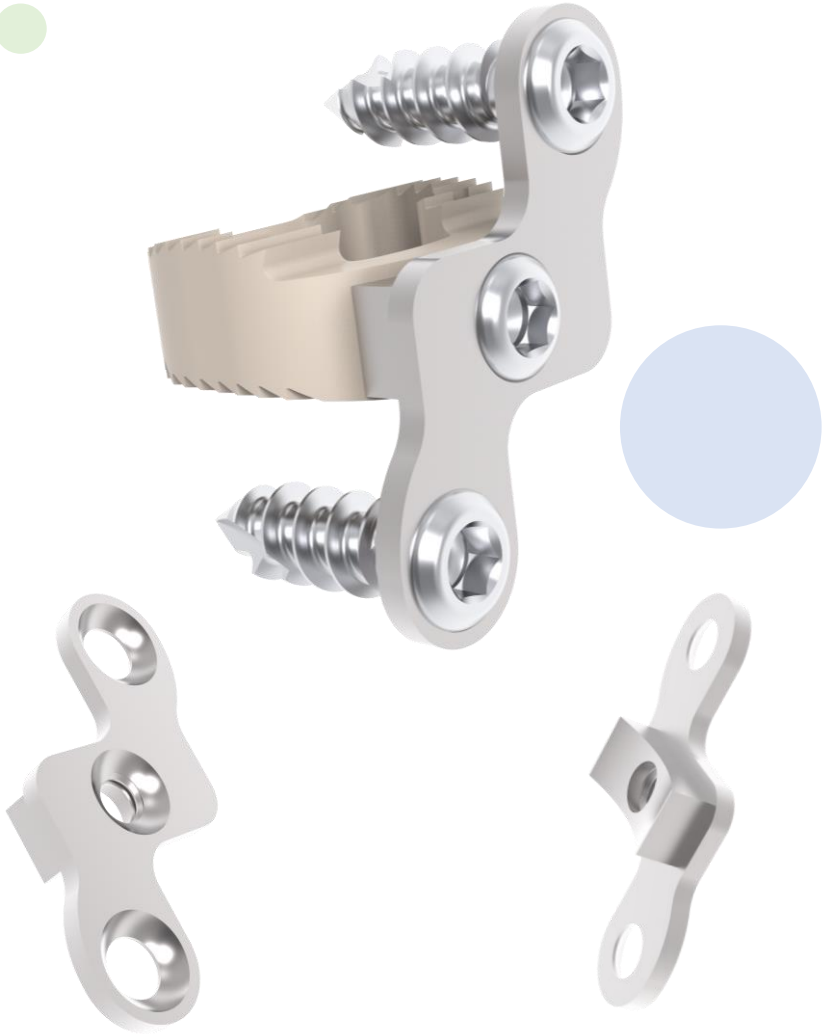
	W x D	Size	Angle
Standard	15 x 13 mm	4 - 10 mm	5°
Small	13 x 11 mm	4 - 9 mm	5°



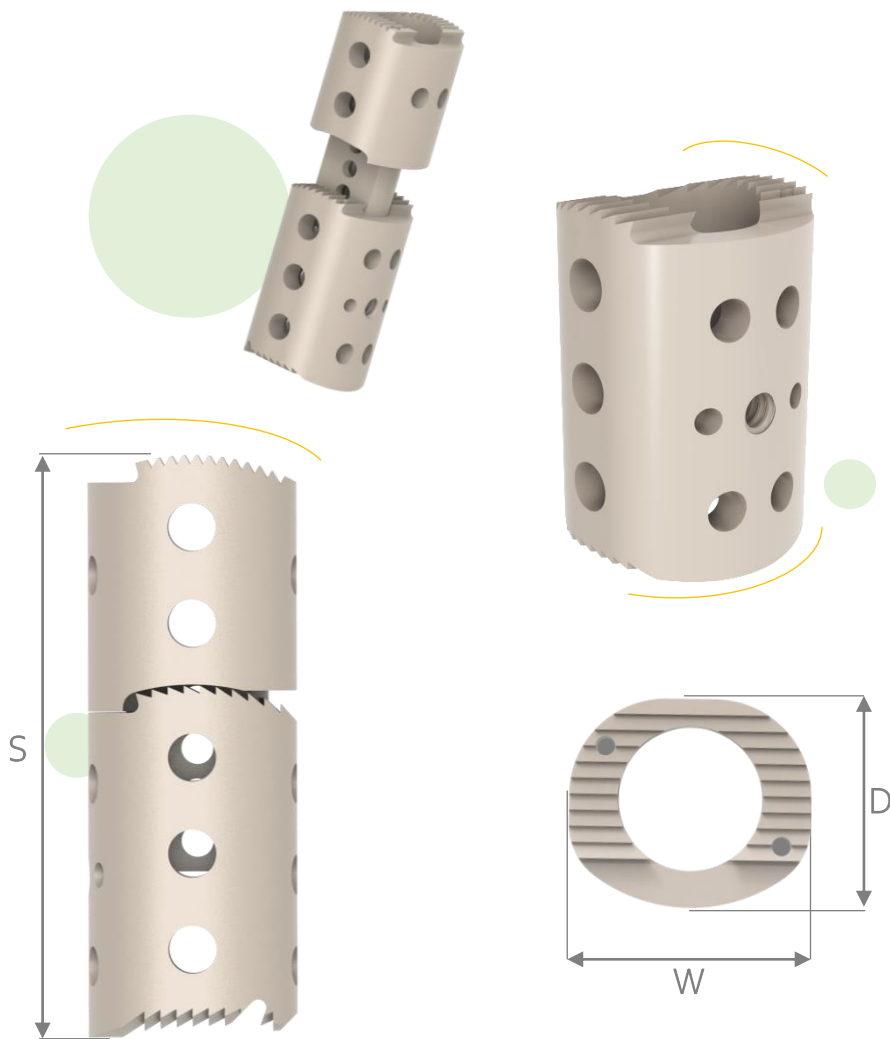
ACDF

	W x D	Size	Angle
Large	17 x 15 mm	4 - 10 mm	5°
Standard	15 x 13 mm	4 - 10 mm	5°
Small	13 x 11 mm	4 - 9 mm	5°

# ACDF

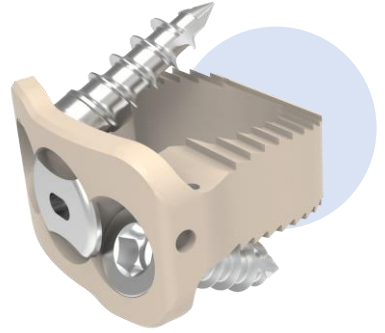
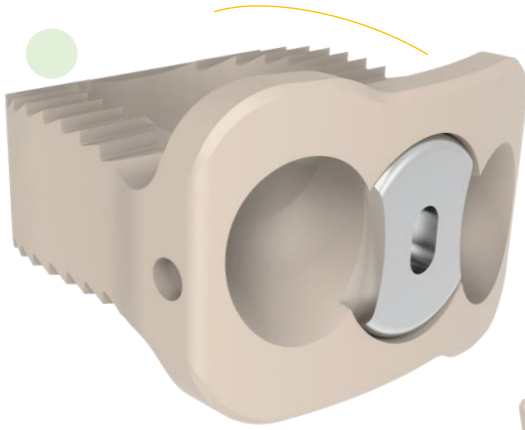


	Screw Ø	Length
	Ø 4	L10 – 20
Plate	Small – Standard – Large	



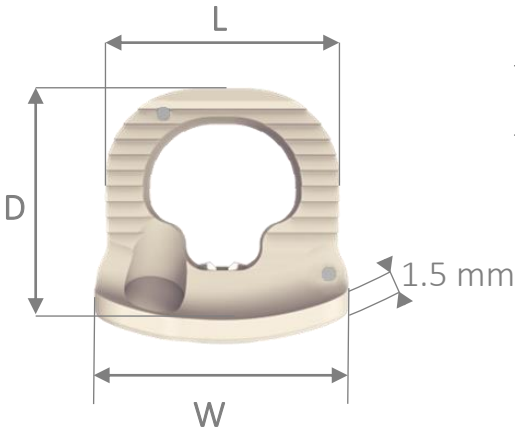
# Correctomy

	W x D	S	Angle
Standard	15 x 13mm	12 – 30mm	5°
Small	13 x 11mm	12 – 30mm	5°
Extension		16 & 30mm	
Total S		32 to 58mm	

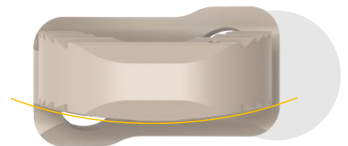


DIVA Crown

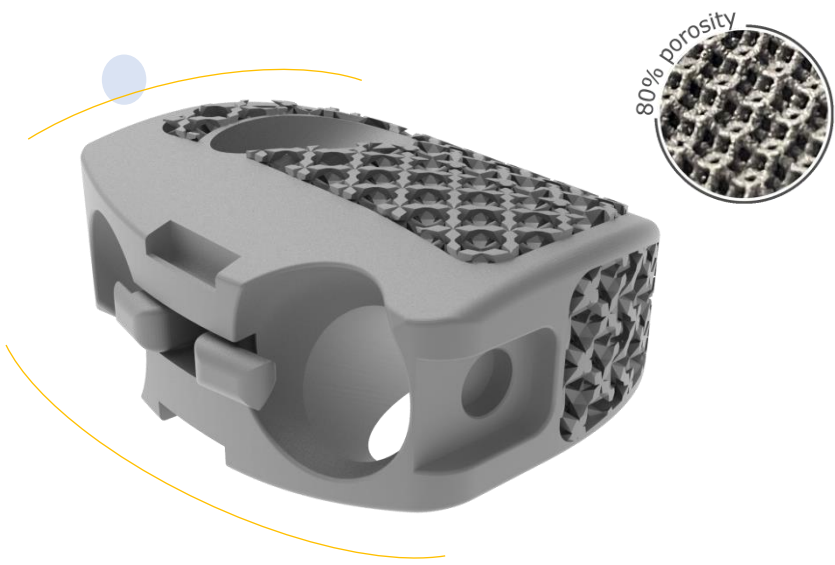
	W x D	L	Size	Angle
Standard	16.4 x 15mm	15mm	4 - 10mm	5°
Small	16.4 x 13mm	13mm	4 - 9mm	5°



Screw Ø	Length
Ø 3.5	L10 - 20
Ø 3.9	L10 - 20

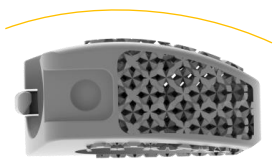






# ACDF Blocked

Screw Ø	Length
Ø 3.5	L10 – 20
Ø 3.9	L10 – 20



	W x D	Size	Angle
Small	16.8 x 12.5 mm	4 - 9 mm	5°
Standard	16.8 x 14.5 mm	4 - 10 mm	5°
Large	17.8 x 15 mm	4 - 10 mm	5°

Small



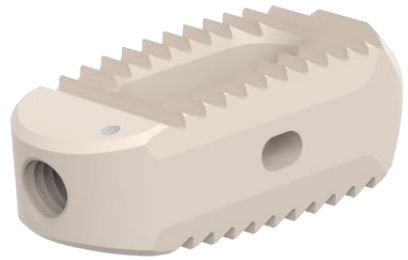
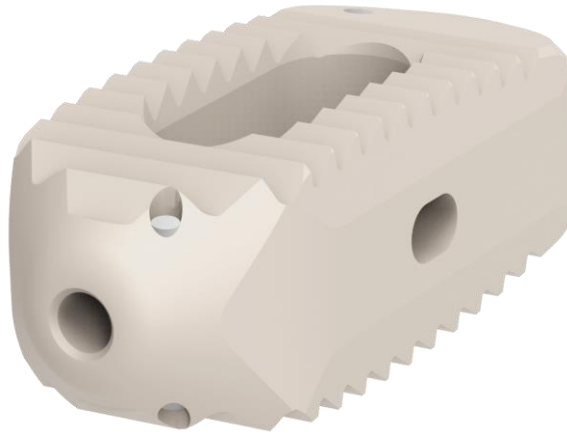
Standard



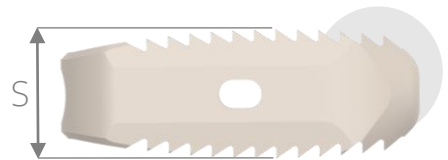
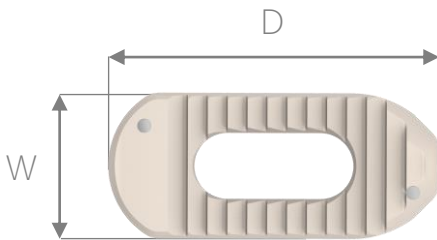
Large

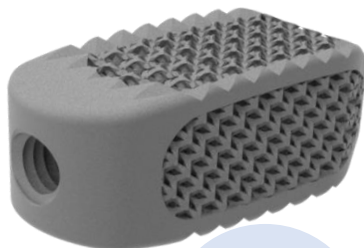
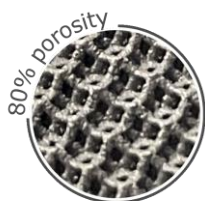


PLIF



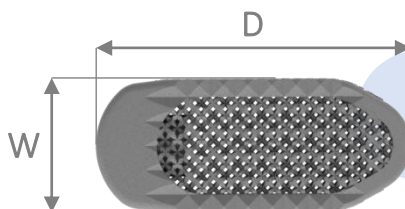
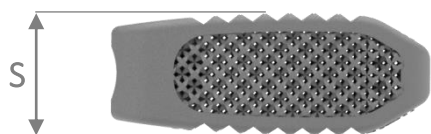
	W x D	Size	Angle
Large	11 x 25 mm	8 - 14 mm	0° 4° 8°
Small	11 x 20 mm	7 - 14 mm	0° 4° 8°



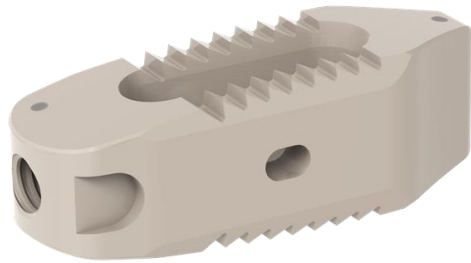
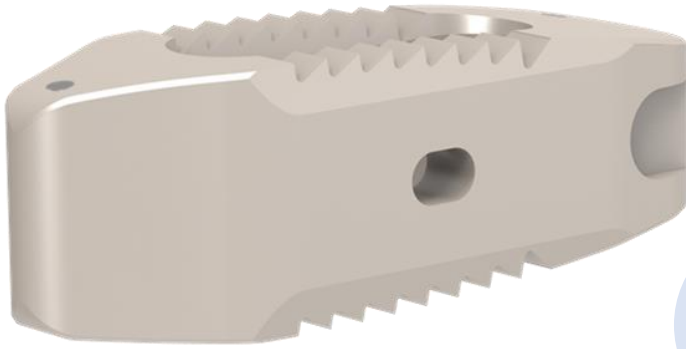


PLIF / TLIF

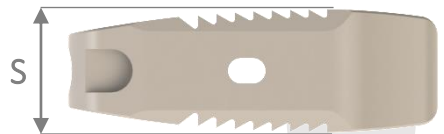
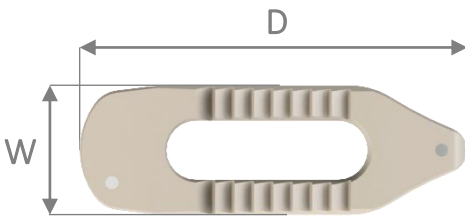
W x D	Size	Angle
11 x 22 mm	7 – 14 mm	6°
11 x 26 mm	7 – 14 mm	6°
11 x 30 mm	7 – 14 mm	6°

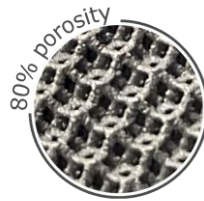
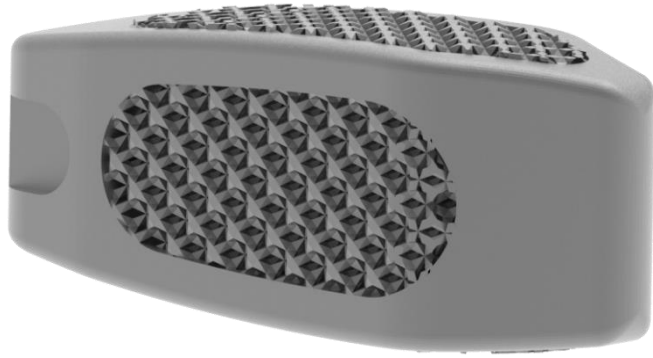


# TLIF Twist



	W x D	Size	Angle
Standard	10 x 30 mm	10 - 14 mm	6°





# TLIF Twist

W x D

Size

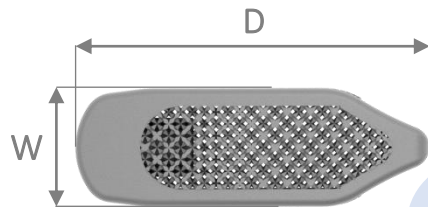
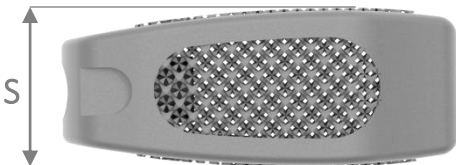
Angle

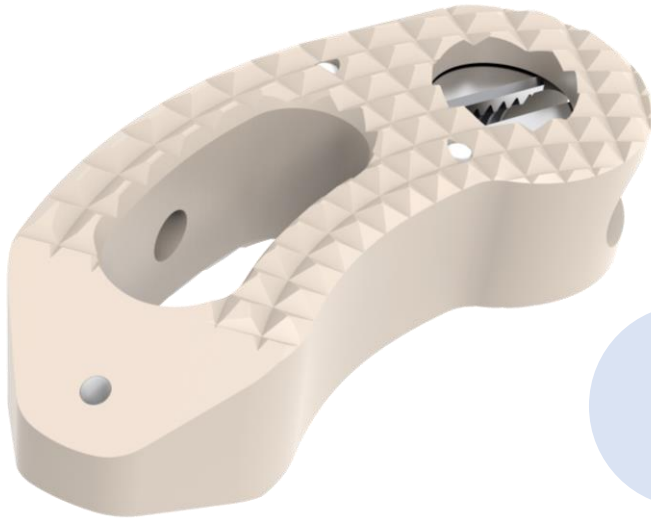
Standard

10 x 30 mm

10 - 14 mm

6°



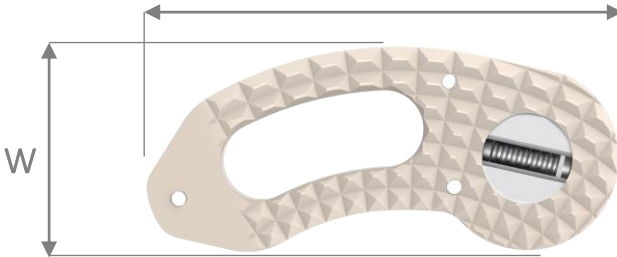


TLIF

	W x D	Size	Angle
Standard	14 x 32 mm	7 - 14 mm	4°

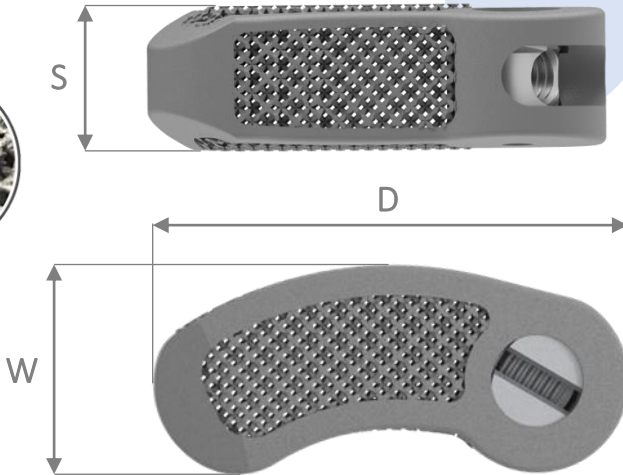
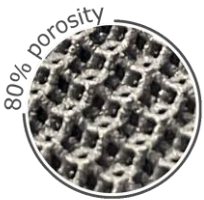


D



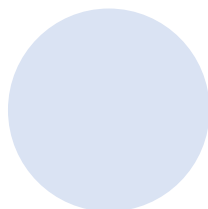


	W x D	Size	Angle
Standard	14 x 32 mm	7 - 14 mm	4°

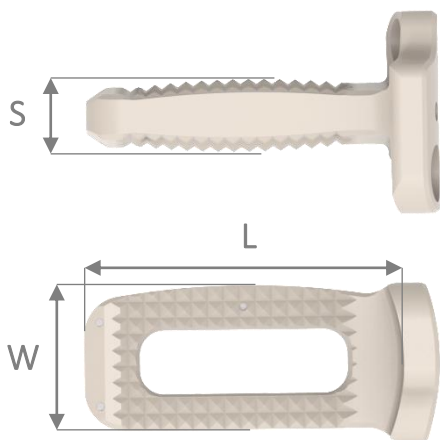


T  
L  
I  
F

# LLIF Blocked



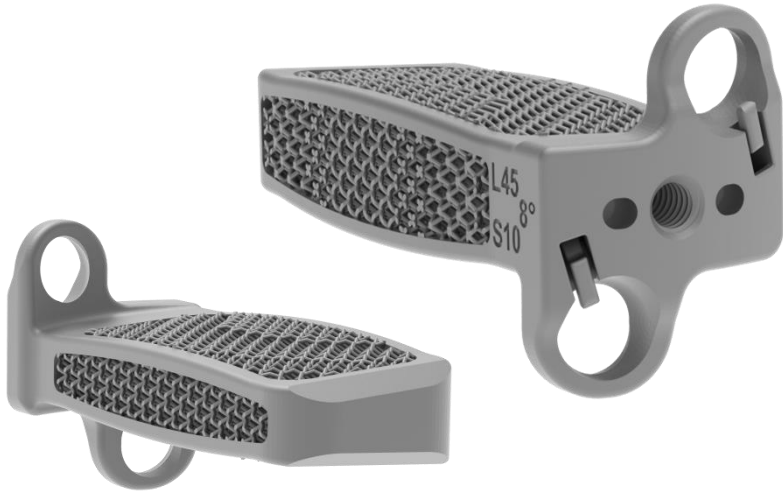
	W x L	Size	Angle
Standard	20 x 45 - 50mm	8 - 18mm	4° 8° 12°
Small	18 x 40 mm	8 - 18mm	4° 8° 12°



Screw Ø	Length
Ø 6	L25 - 60



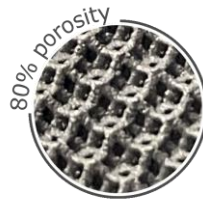
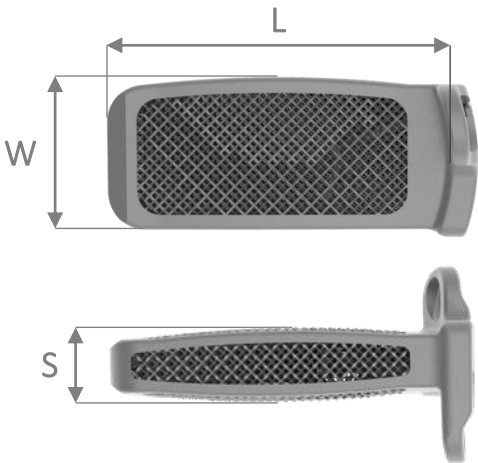


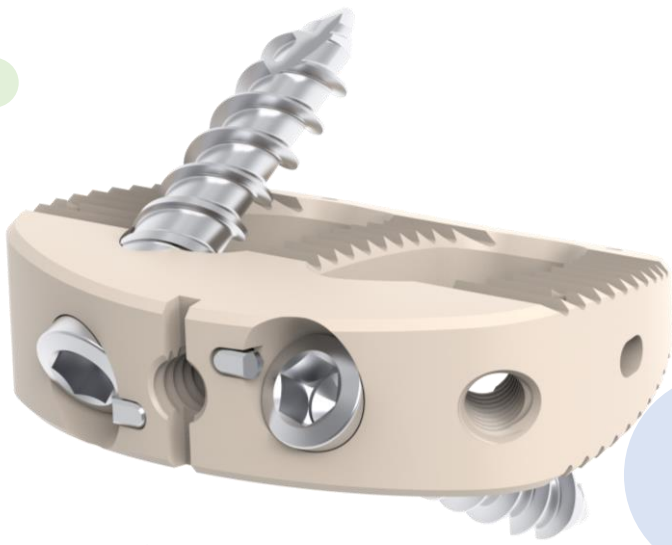


# LLIF Blocked

	W x L	Size	Angle
Standard	20 x 35 - 60mm	8 - 18mm	4° 8° 12°

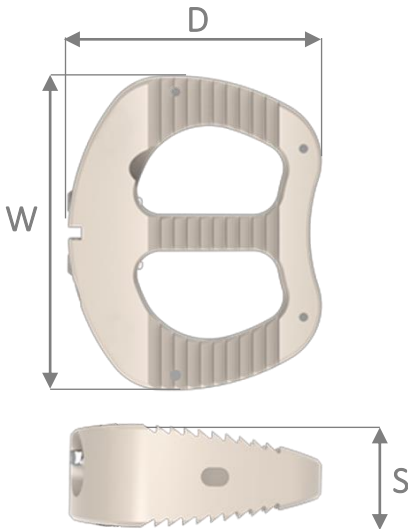
Screw Ø	Length
Ø 6	L25 - 60



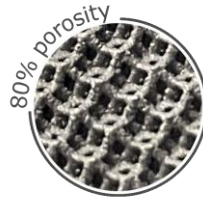
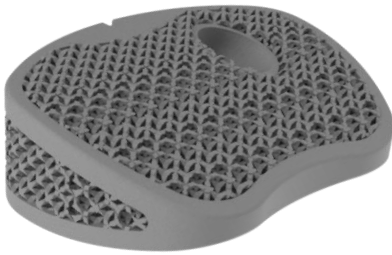
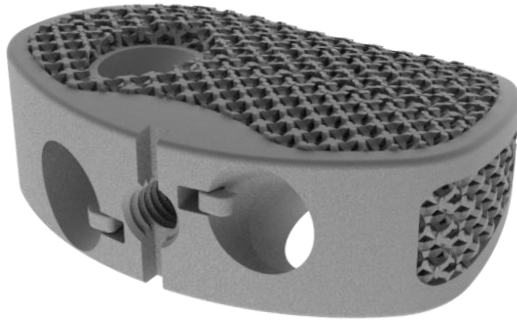


DIVA Queen

	W x D	Size	Angle
Standard	36 x 29 mm	8 - 18 mm	8° 12° 18°
Small	32 x 24 mm	8 - 18 mm	8° 12° 18°



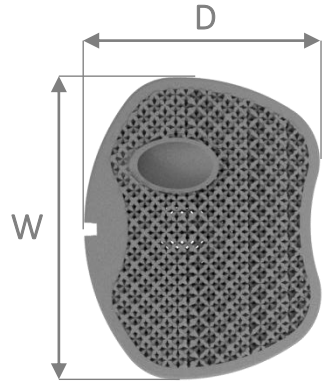
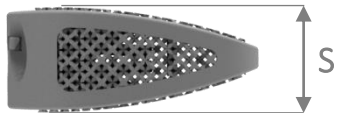
Screw Ø	Length
Ø 5.5	L20 - 50



# ALIF Blocked

	W x D	Size	Angle
Standard	36 x 29 mm	8 - 18 mm	8° 12° 18°
Small	32 x 24 mm	8 - 18 mm	8° 12° 18°

Screw Ø	Length
Ø 5.5	L20 - 50





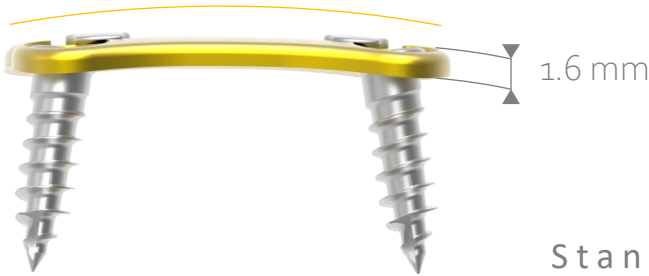
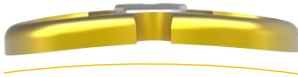
---

# MATRIS

---

Cervical Plates





Standard &  
Self-Drilling



	Length
Plate	20 - 80 mm
Ø 4 Screw	L10 - 24
Ø 4.5 Screw	L12 - 32

Made of TA6V

MATRIS





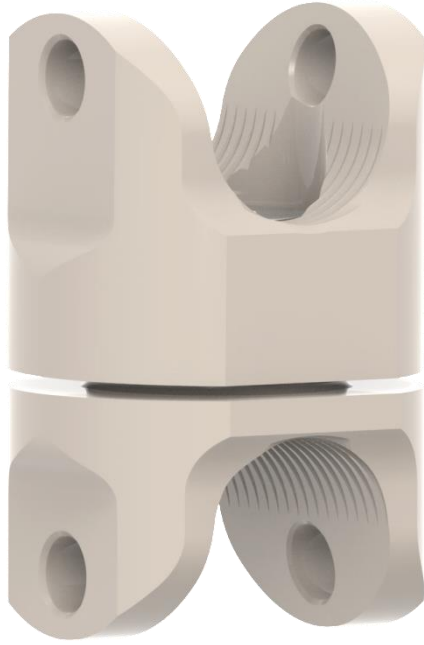
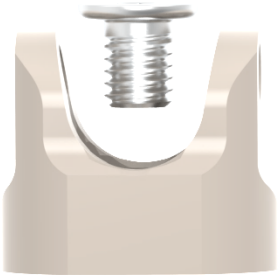
---

# RODD

---

Interspinous device





	Size
Small	8 - 16
Standard	8 - 16

Made of PEEK

RODD




# About NovaSpine

All devices presented in this catalogue are implantable medical devices designed and manufactured by NovaSpine.

It is **CE** marked and belong to Class IIb

NovaSpine is a pioneer in the development of unique technologies with compact instruments sets, minimally invasive surgeries, DVR systems, for simplified and optimal surgical experience.



Our passion is dedicated for patients who receive our products. Patients' needs are always at the forefront of our decision making.

Instructions for use must be read carefully prior to any use.





# NovaSpine

---

335, Rue Saint-Fuscien

80090-Amiens, France

+33 (0)3 22 50 07 31

[contact@novaspine.fr](mailto:contact@novaspine.fr)

[www.novaspine.fr](http://www.novaspine.fr)