

RELINE

Surgical Efficiency Meets Reliable Versatility



RELINE

EVOLVING POSTERIOR FIXATION TECHNOLOGY WITHIN THE IGA PLATFORM

The Reline portfolio is the evolution of posterior fixation technology within the iGA platform, providing integrated Open and MAS procedural solutions.

Whether preserving or restoring spinal alignment, the seamless and versatile design of Reline provides one system to address even the most difficult pathologies.



Surgical Efficiency

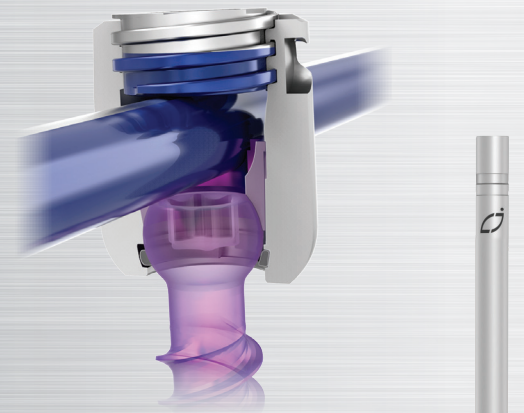
Universal Open and MAS solutions created to help deliver an enhanced surgical experience:

- Fully compatible Open and MAS instrumentation
- Seamless integration with NuVasive Power instruments and NVM5
- Streamlined rod insertion facilitated by the Bendini Rod Bending system

Operative Reliability

Multiple surgical options designed to provide dependable strength:

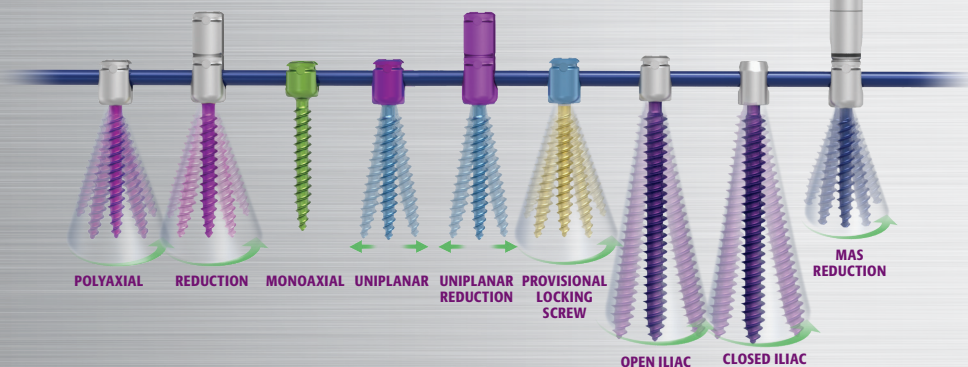
- Patented Helical Flange® Locking Technology providing reliable performance
- Rigid instrument engagement delivering intraoperative dependability
- Multi-functional instruments offer a flexible approach to help with challenging procedures



Procedural Versatility

Pathology-based instrumentation to approach a variety of surgical techniques:

- Implants accommodate multiple rod diameters and materials
- Anatomically designed kyphotic, lordotic, and tapered diameter rods



DEGENERATIVE

The Reline posterior fixation portfolio offers traditional Open, MAS, and hybrid approach solutions to achieve alignment objectives in degenerative cases.

TRADITIONAL OPEN APPROACH SURGERY

Surgical Efficiency

- Multi-functional screwdriver accommodates multiple screw types
- Delivery of up to eight lock screws with a single instrument
- Streamlined tray design to minimize O.R. footprint

Simplified Alignment Correction

- Intuitive, single-step reduction
- Multiple compression options to restore lordosis



MAXIMUM ACCESS SURGERY (MAS)

Reline MAS reproducibly and efficiently treats spinal pathologies ranging from simple degenerative to complex deformity procedures.

Dependable Strength

- Enhanced MAS Reduction Screw tab design
- Powerful reduction capabilities

Procedural Versatility

- Optimized instrument and implant rod passing solutions
- Flexible approach to both rod and spondylolisthesis reduction
- Effective compression and distraction options

Enhanced Simplicity

- Streamlined instrumentation designed to reduce surgical steps
- Intuitive green line indicator provides reliable confirmation



DEFORMITY

The Reline portfolio includes Open and MAS procedural solutions designed to achieve alignment correction in both adolescent and adult deformities.

Multiple Reduction Options

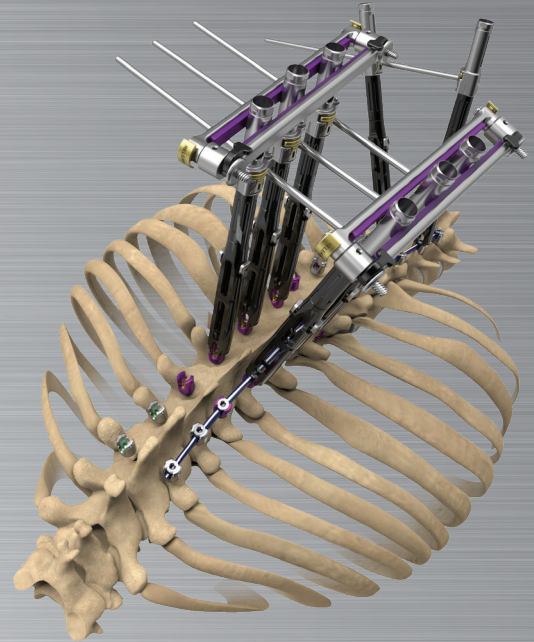
- Ability to dial-in correction with up to 40mm of controlled and powerful reduction
- Dual-lead Polyaxial and Uniplanar Reduction Screw offerings

Vertebral Body Derotation (VBD) System

- Facilitates segmental and en-bloc techniques
- Multi-functional instruments deliver simultaneous derotation and reduction

3CO Three-Column Osteotomy System

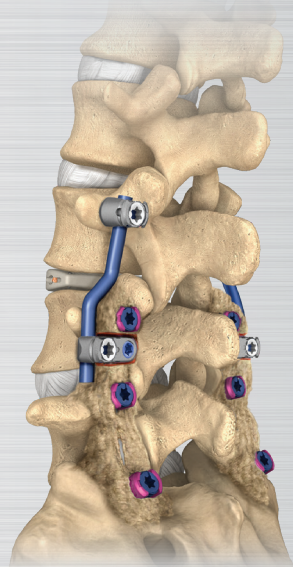
- Focused system designed for all posterior osteotomy corrective techniques
- 3CO Rack enables stabilization and controlled closure of the osteotomy site



REVISION SURGERY

Dedicated and simplified revision system designed to:

- Streamline fusion mass removal
- Minimize tissue disruption
- Versatility to connect onto a variety of existing constructs



POWER

Power capabilities integrated into the iGA portfolio, providing the utmost in surgical efficiency

- Linear, variable-speed, integrated with NVM5
- Ergonomically designed, low weight, cordless hand piece
- Designed with more than 50 years of power experience



Integrated Global Alignment



Integrated Global Alignment (iGA) is a platform comprised of procedurally based technologies, designed to enhance clinical and economic outcomes by increasing the predictability of achieving global alignment in all spinal procedures. Integration across the surgical workflow allows the surgeon to confidently and reproducibly:

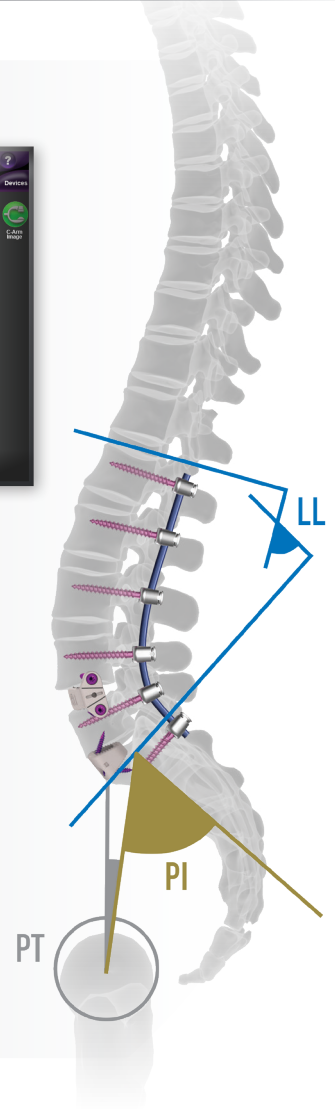
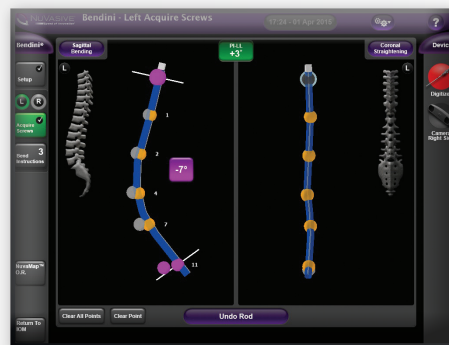
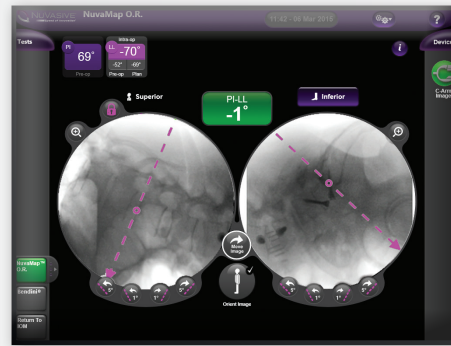
- **Calculate** alignment parameters with preoperative planning tools.
- **Correct** the anterior and posterior column with comprehensive procedural solutions from NuVasive with the industry's only real-time intraoperative assessment.
- **Confirm** the restoration and preservation of global alignment postoperatively.

WHY ALIGNMENT MATTERS.

Current and emerging data illustrate a direct correlation between spinal alignment and long-term clinical outcomes. Specific spinopelvic parameters, including the proportionality of pelvic incidence (PI) and lumbar lordosis (LL), are key predictors in determining successful patient outcomes in all spinal procedures from single- to multi-level pathologies. NuVasive is committed to a global approach for assessing, preserving, and restoring spinal alignment in an effort to promote surgical efficiencies, lasting patient outcomes, and improved quality of life.

Alignment Matters.

¹Terran J, Schwab F, Shaffrey CI, et al. The SRS-Schwab adult spinal deformity classification: assessment and clinical correlations based on a prospective operative and nonoperative cohort. *Neurosurg* 2013;73(4):559-68.

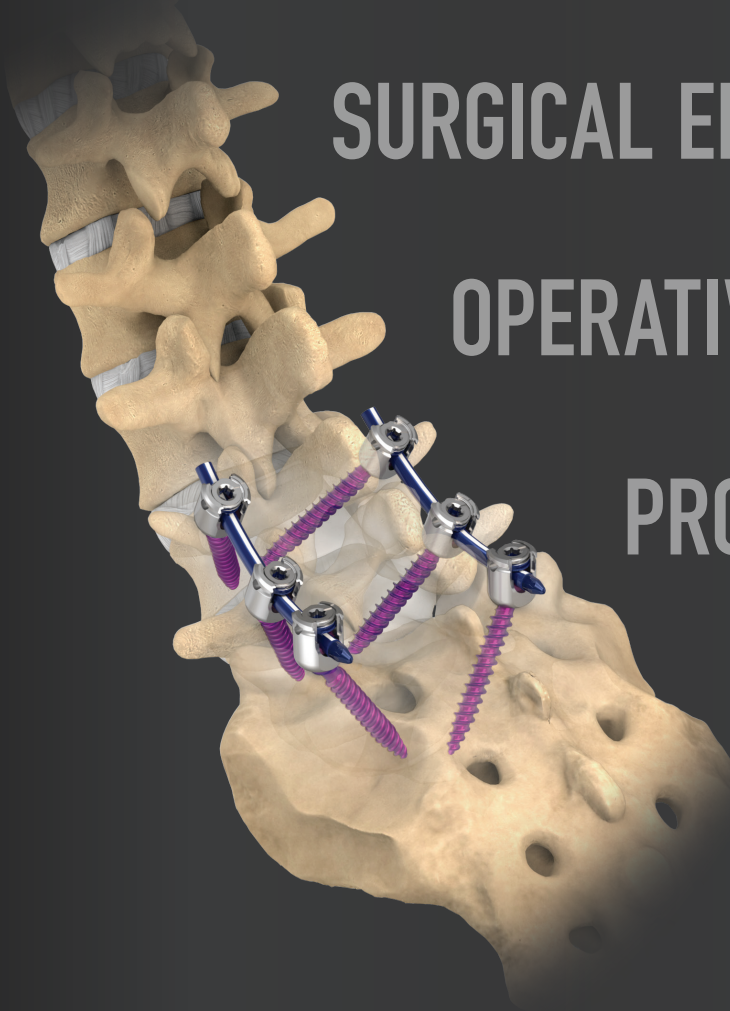


RELINE

RELINE

Preservation. Restoration.

The Reline portfolio is the evolution of posterior fixation technology within the iGA platform, providing integrated Open and MAS procedural solutions.




SURGICAL EFFICIENCY


OPERATIVE RELIABILITY

PROCEDURAL
VERSATILITY



To order, please contact your NuVasive Sales Consultant or Customer Service Representative today at:

 **NuVasive, Inc.** 7475 Lusk Blvd., San Diego, CA 92121 USA • phone: 800-475-9131 fax: 800-475-9134

 **NuVasive Netherlands B.V.** Jachthavenweg 109A, 1081 KM Amsterdam, The Netherlands • phone: +31 20 72 33 000

nuvasive.com

©2020. NuVasive, Inc. All rights reserved. Helical Flange is a registered trademark of Roger P. Jackson. 9501378 C

 2797